



SCAN FOR WEBSITE

# DEFENCE

OUR MANUFACTURING CAPABILITIES ARE  
THE BACKBONE OF OUR EXCELLENCE



**WE** RESEARCH  
DESIGN  
MANUFACTURE



ADVANCED SOLUTIONS FOR CRITICAL INFRASTRUCTURE



**JMV LPS LIMITED**

# JMV LPS LIMITED

**Established in 2008, JMV LPS Limited** drives technological innovation and catalyzes transformative change in the industry, creating a safer and advanced future. With cutting-edge manufacturing units covering 0.1 million Sq. Ft. in Delhi NCR, we offer value-added engineering services, computer-aided solution designing, and efficient on-site project execution.

We boast a strong presence for over 15 years. Our end-to-end approach includes **optimized design solutions, customized manufacturing, and in-house research** at our state-of-the-art **Development Center Cum Testing Lab**, ensuring the **highest quality and innovation**.

**WE** **RESEARCH**  
**DESIGN**  
**MANUFACTURE**

**15**  
years





# INDEX

1. Perimeter Intrusion Detection System .....	4-5
2. Remote Fiber Monitoring System (RFMS) .....	6
3. Digital Grounding System .....	7
4. HESCO Bag .....	8
5. Hard Carrying Cases Variants .....	9
6. Ammunition Pallet .....	10
7. Optical Sights .....	11
8. Modification Kit for AK-47 .....	11



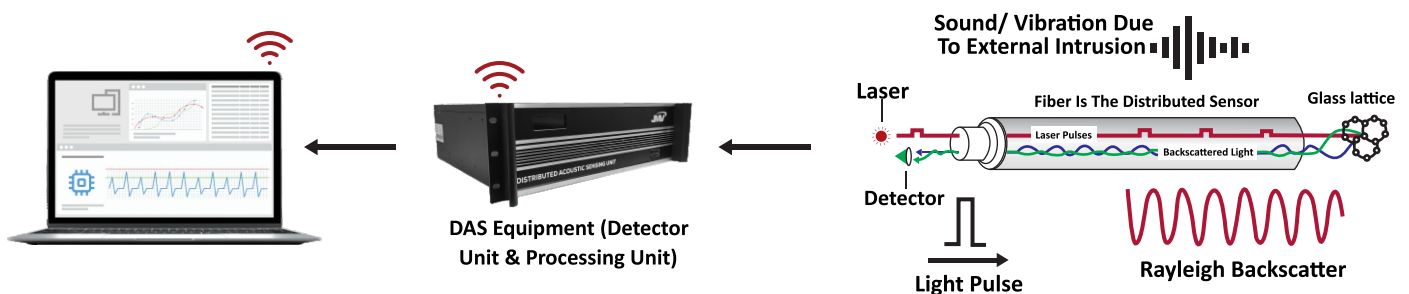
# PERIMETER INTRUSION DETECTION SYSTEM

JMV LPS Ltd. introduces an advanced Intrusion Detection System (IDS) powered by Distributed Acoustic Sensing (DAS) technologies—designed for real-time, intelligent monitoring of critical infrastructures. Using fibre optic cables as continuous sensors, DAS detects acoustic disturbances like vibrations changes. These technologies provide high-precision alerts across the entire fibre length, enabling early identification of threats such as intrusions, digging, etc.

## PRODUCT TECHNOLOGY

**The technology is based on Rayleigh Back scattering phenomenon in which:**

- The laser pulses are periodically sent down an optic fibre cable, looking for Backscatter to perform acoustic sensing.
- The signature of the backscatter changes with change in vibration/acoustic energy.
- The entire length of the fibre optic cable acts like a sensor and every meter act like an independent microphone.
- The system calculates the exact location of each backscatter event by knowing the speed of light and the time it takes for the back scattered light to return to the source.
- This precise localization allows for quick response and accurate identification of potential hazards.



## SIGNIFICANCE

The deployment of an advanced Intrusion Detection System (IDS) using DAS technology significantly enhances security infrastructure by:



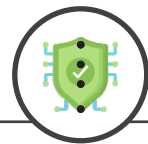
### Real-Time Detection

Achieve instantaneous identification of potential security threats within the monitored area



### Minimize False Positives/Negatives Alarms

Implement algorithms and protocols to reduce false alarms without compromising detection accuracy.



### Seamless Integration

Ensure compatibility with existing infrastructure for a cohesive and efficient security network.



# MAJOR COMPONENTS

The three main components of this completely indigenous Intrusion Detection System are:

- **Distributed Acoustic Sensing (DAS) Unit** – This DAS unit is being manufactured in India by **JMV**.
- **Optical Fiber** – It utilises 6 fiber cable which is easily available in India.
- **Software** – The software for user interface is also a **JMV** product.



DAS Unit



Network Management Software



Display



Optical Fiber Cable



Remote Alarm Unit



IP Based Hooter



Reset Unit

## APPLICATIONS



### Tunnel Detection

- Tunneling Activity Profiling
- Vibrations cause by digging, drilling, or blasting.
- Tunnel Mapping and Localization



### Perimeter Security for Military Bases

- Real-Time Intrusion Detection
- Unauthorized Personnel or Vehicles detection



### Border Surveillance

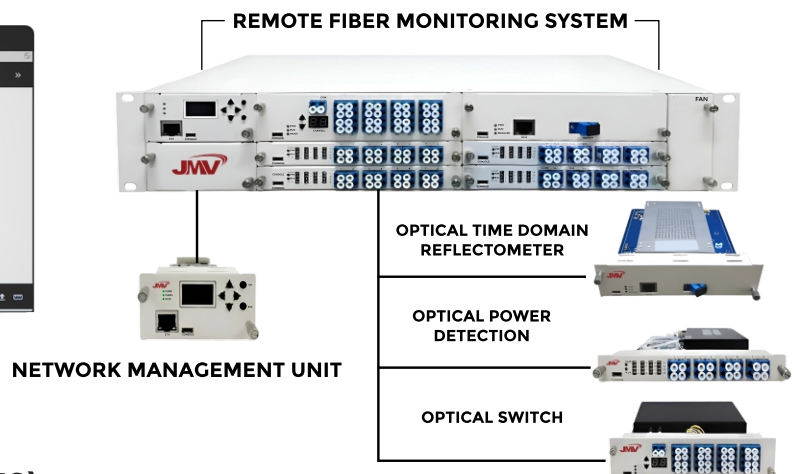
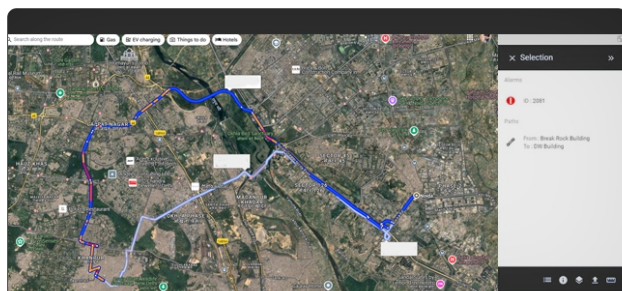
- Real-Time Monitoring and Alerts
- Real-Time Unauthorized Crossings & Intrusion Alerts
- Activity Classification such as pedestrian movement, vehicle traffic

# REMOTE FIBRE MANAGEMENT SYSTEM/ RFMS

**The Remote Fiber Monitoring System (RFMS)** ensures the health and reliability of optical fiber networks by detecting faults, degradation, and predicting failures in real-time. It provides 24/7 monitoring, instant alerts via SMS/email, and supports preventive maintenance, minimizing downtime and operational risks. Widely used in railways, telecom, defense, utilities, and critical infrastructure, RFMS improves reliability while reducing Mean Time to Repair (MTTR) and maintenance costs.

## KEY FEATURES

- **24x7 Real-Time Monitoring:** Continuous supervision of both dark and live fibers.
- **Accurate Fault Location:** Pinpoints exact location of fiber breaks or degradation using OTDR.
- **Instant Alerts:** SMS / Email notifications to maintenance teams for quick response.
- **Preventive Maintenance:** Monitors fiber health, predicts failures, and avoids service disruptions.
- **Integration Capability:** Works with NMS/OSS and GIS systems.
- **High Scalability:** Supports monitoring of thousands of fibers across multiple zones.
- **Data & Reports:** Provides detailed statistical, historical, and real-time reporting.
- **Failover Mechanism:** No data loss even if primary server fails; automatic backup supported.



## SYSTEM COMPONENTS

- **Elementary Management System (EMS)**  
Central hub for configuration, monitoring, and performance management.
- **Optical Test Access Unit (OTAU)**  
A 1xN optical switch for controlling and scanning fiber paths.
- **Optical Time Domain Reflectometer (OTDR)**  
Locates breaks, bends, and fiber degradation points with precision.
- **Optical Power Detection (OPD)**  
Monitors signal strength, losses, and supports maintenance activities.

## MONITORING METHODS

- **Active Fiber Monitoring (1625 nm, non-intrusive):**  
Uses WDM couplers to test live fibers without disrupting traffic.
- **Dark Fiber Monitoring (1550/1625 nm):**  
Performs high-power testing on unused fibers for detailed diagnostics.



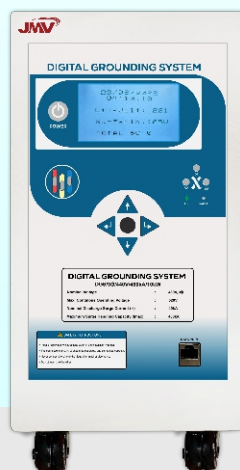
# DIGITAL GROUNDING SYSTEM

An Earthing Device That Need Not To Be Buried Under The Ground

The **Digital Grounding System (DGS)** is an electronic device that ensures optimal grounding & surge protection for sensitive equipment. With a low impedance ground built-in & surge protection it eliminates abnormal voltage & induced transients, as well as any static charge, noises, or other electrical anomalies that may affect valuable equipment. By providing a clear bonding potential and equipotential platform, it eliminates the possibility of step voltage damage and ensures a grounding network impedance of less than 1Volt.



**Rack Mount**



**Trolley Mount**



**Wall Mount**

## FEATURES

- Detects the presence and absence of Earth.
- Provides a perfect means of Grounding.
- Saves the no. of Surge Counts with Date & Time.
- Maintains <1V between Neutral-Earth.
- Has almost zero installation complexity.
- Reduces noise & surge spikes present in power lines.

## SUCCESSFULLY PERFORMING AREA



**Defence System**



**Mobile Radar**



**Rocky-Hilly-Island BST**



**Border Surveillance**

# HESCO BAG

A geotextile-lined recoverable unit for general use as an earth-filled barrier. The units are suitable for filling with earth, sand, gravel, crushed rock and other granular materials. The unit fulfills a wide range of uses, including the construction of protective walls and barriers.

Geotextile-lined welded mesh barrier coated to ASTM A 856. All wires conform to BS EN 10218-2:2012. Zinc-Aluminum coatings are to BS EN 10244-2:2009, where appropriate. The geotextile is a heavy-duty, non-woven, permeable, polypropylene fabric, available in either sand color, olive green, white & black color.



**COLOR:** SAND COLOR (OTHER OPTIONS ARE AVAILABLE)

**\*Can Be Customized As Per The Requirement.**



# HARD CARRYING CASES VARIANTS

## DESIGNED IN ENGINEERING PLASTICS

Perfect for organizing, protecting and carrying your most important smaller gear, the waterproof hard case is impenetrable and indestructible with a lightweight, tough resin shell and double side-mounted superior latching system. The molded interior is designed to help keep your hardware, Inside, products can be secured with cubed foam, custom foam. accessories entirely organized.



**Part No. 0ARLLDPE878458**  
**Technical Specifications**

**Exterior Size (LxWxH)**  
875 mm x 840 mm x 585 mm

**Interior Size (LxWxH)**  
790 mm x 750 mm x 425 mm

**Weight      Tolerance**  
20kg Approx    ±10



**Part No. 0BILLDPE534627**  
**Technical Specifications**

**Exterior Size (LxWxH)**  
530 mm x 465 mm x 270 mm

**Interior Size (LxWxH)**  
440 mm x 375 mm x 240 mm

**Weight      Tolerance**  
14.6kg Approx    ±10



**Part No. 0BILLDPE615324**  
**Technical Specifications**

**Exterior Size (LxWxH)**  
610 mm x 530 mm x 240 mm

**Interior Size (LxWxH)**  
520 mm x 440 mm x 225 mm

**Weight      Tolerance**  
6kg Approx    ±10



**Part No. 0AIP824925**  
**Technical Specifications**

**Exterior Size (LxWxH)**  
820mm X 495mm X 255mm

**Interior Size (LxWxH)**  
725mm X 405mm X 235mm

**Weight      Tolerance**  
14.6kg Approx    ±5



**Part No. 1AIP553522**  
**Technical Specifications**

**Exterior Size (LxWxH)**  
559 mm x 356 mm x 229 mm

**Interior Size (LxWxH)**  
521 mm x 287 mm x 191 mm

**Weight      Tolerance**  
5.2kg Approx    ±5



**Part No. 1AIP504025**  
**Technical Specifications**

**Exterior Size (LxWxH)**  
505 mm x 409 mm x 257 mm

**Interior Size (LxWxH)**  
457 mm x 330 mm x 241 mm

**Weight      Tolerance**  
3.6kg Approx    ±5



**Part No. 0CABS423319**  
**Technical Specifications**

**Exterior Size (LxWxH)**  
420 mm x 335 mm x 195 mm

**Interior Size (LxWxH)**  
400 mm x 280 mm x 180 mm

**Weight      Tolerance**  
2.5kg Approx    ±5



**Part No. 1CIP161151**  
**Technical Specifications**

**Exterior Size (LxWxH)**  
169 mm x 119 mm x 51 mm

**Interior Size (LxWxH)**  
151 mm x 89 mm x 40 mm

**Weight      Tolerance**  
2.3kg Approx    ±5



**Part No. OCCFRP462217**  
**Technical Specifications**  
 Exterior Size (LxWxH)  
 465mm X220mm X 175mm  
 Interior Size (LxWxH)  
 445mm X 200mm X 165mm  
 Weight      Tolerance  
 2.8 kg Approx    ±5



**Part No. OCCFRP361416**  
**Technical Specifications**  
 Exterior Size (LxWxH)  
 364mm X 148mm X 160mm  
 Interior Size (LxWxH)  
 344 mm x 128 mm x 150 mm  
 Weight      Tolerance  
 1.8kg Approx    ±5



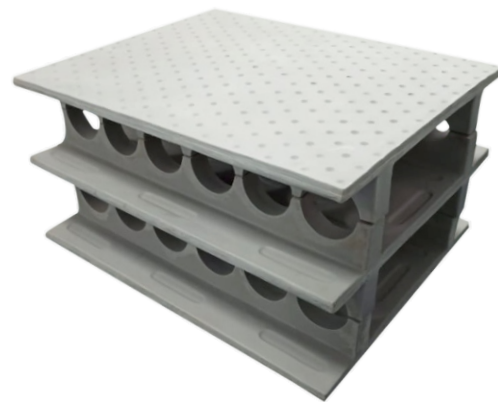
**Part No. OCIP351922**  
**Technical Specifications**  
 Exterior Size (LxWxH)  
 350mm X 190mm X 220mm  
 Interior Size (LxWxH)  
 280mm x140mm x 180mm  
 Weight      Tolerance  
 2.3kg Approx    ±5

## AMMUNITION PALLET

**105 & 155mm** Shell Pallet typically refers to a pallet designed for the storage and transportation of 105 & 155mm artillery shells. These shells are commonly used in heavy artillery and howitzers by military forces around the world. These shells are heavy and potentially hazardous, so proper storage and handling are essential to ensure safety



**105mm Ammunition Pallet**



**155mm Ammunition Pallet**



# OPTICAL SIGHTS

With cutting-edge facilities and a commitment to excellence, we produce a wide range of high-quality optical sights for various applications. It involves state-of-the-art machinery and highly skilled technicians, ensuring each optical sight meets rigorous quality standards. We specialize in crafting scopes, red dot sights, holographic sights, and more, designed to enhance accuracy and target acquisition in various shooting scenarios.



MILITARY SIGHTS



RED DOT SIGHTS



OPTICAL SIGHTS

# MODIFICATION KIT FOR AK47

The AK-47 upgrade enhances the existing weapon by incorporating a foldable buttstock, vertical foregrip, redesigned handguard, improved magazine, ergonomic pistol grip, and modified dust cover. These upgrades improve weapon control, reliability, and adaptability in modern combat scenarios.



FOLDABLE BUTTSTOCK



VERTICAL FOREGRIP



FOLDABLE BUTTSTOCK



HAND GUARD



FOLDABLE BUTTSTOCK



MAGAZINE



PISTOL GRIP



FOLDABLE BUTTSTOCK



DUST COVER  
(3 PICATINNY RAIL)

# CLIENTELE



and many more....

## WHY CHOOSE JMV?



**CUSTOMIZED  
SOLUTIONS**



**INHOUSE R&D CUM  
TEST LAB**



**COMPLETE SOLUTION  
PROVIDER**



**COMPETITIVE PRICING**



**EXPERIENCED TEAM**



**HIGH QUALITY**



JMV LPS Ltd.  
W50, Sector 11, Noida 201301, India



[www.jmv.co.in](http://www.jmv.co.in)



+91-0120-4590000



[contact@jmv.co.in](mailto:contact@jmv.co.in)

**FOLLOW US ON!**

